

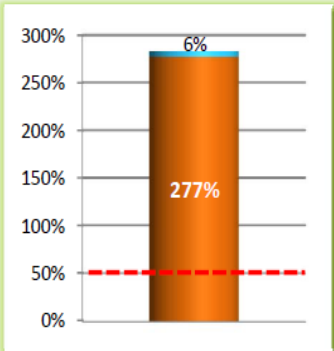
# FY13 Actual Income Summary As of June 30, 2013:

**- SAMPLE -**

## PRELIM DATA

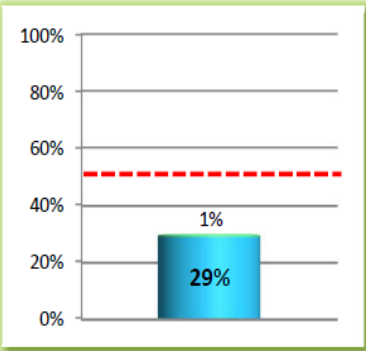
### NATIONAL (Uncover the Word™)

#### Armed Services Ministry



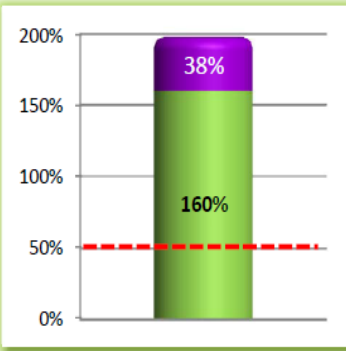
Budget*	\$ 2,159,339
50% Min. Target:	\$ 1,079,670
Actual Income to Date:	\$ 6,099,808
Budget SURPLUS:	\$ 5,020,139

#### Multi-Language Ministries



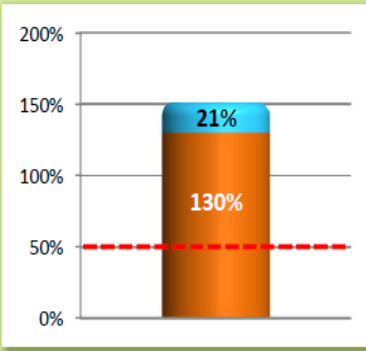
Budget:	\$ 1,210,541
50% Min. Target:	\$ 605,271
Actual Income to Date:	\$ 362,135
Budget GAP:	\$ (243,136)

#### Bibles.com



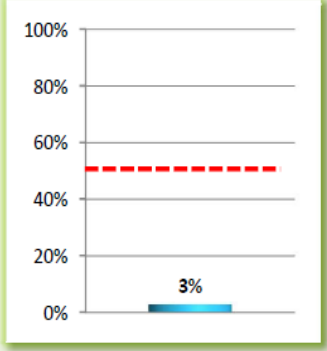
Budget:	\$ 4,768,682
50% Min. Target:	\$ 2,384,341
Actual Income to Date:	\$ 9,452,446
Budget SURPLUS:	\$ 7,068,105

#### Embodying Hope



Budget:	\$ 1,087,937
50% Min. Target:	\$ 543,969
Actual Income to Date:	\$ 1,638,422
Budget SURPLUS:	\$ 1,094,454

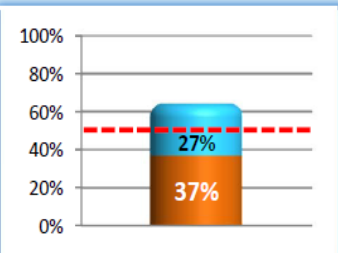
#### Nida Institute



Budget:	\$ 2,595,398
50% Min. Target:	\$ 1,297,699
Actual Income to Date:	\$ 84,266
Budget GAP:	\$ (1,213,433)

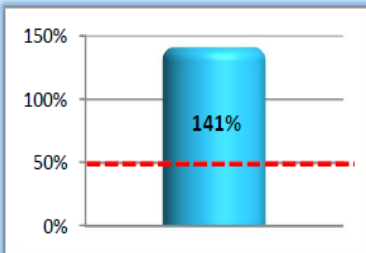
### INTERNATIONAL

#### Eradicating Bible Poverty



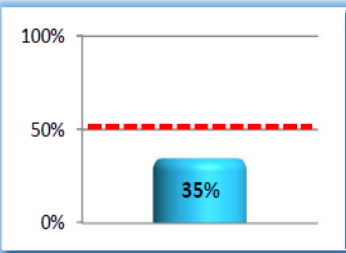
Budget:	\$ 12,912,911
50% Min. Target:	\$ 6,456,456
Actual Income to Date:	\$ 8,262,622
Budget SURPLUS:	\$ 1,806,167

#### Every Tribe Every Nation



Budget:	\$ 1,800,000
50% Min. Target:	\$ 900,000
Actual Income to Date:	\$ 2,540,842
Budget SURPLUS:	\$ 1,640,842

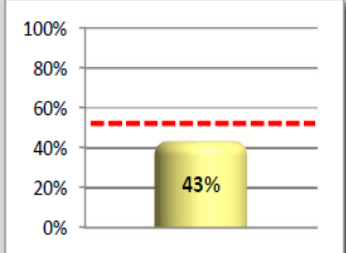
#### Restoration Ministries



Budget:	\$ 2,190,602
50% Min. Target:	\$ 1,095,301
Actual Income to Date:	\$ 771,880
Budget GAP:	\$ (323,421)

### PIPELINE

#### Strategic Ministries



Budget:	\$ 1,248,034
50% Min. Target:	\$ 624,017
Actual Income to Date:	\$ 537,001
Budget GAP:	\$ (87,016)

#### LEGEND

- Major donors
- Community Giving
- Sales
- Royalties
- GMA
- Fees

**--- 50% Min. Target**

\* Budget also includes BOT military funds because it is a donor-funded prog. that falls outside GSM's operating budget

**NOTE: Each percentage represents the amount of income received to date to offset operating expense**